



COLORADO
Department of
Transportation

GAB Ped/Bike Permanent Project Elements:

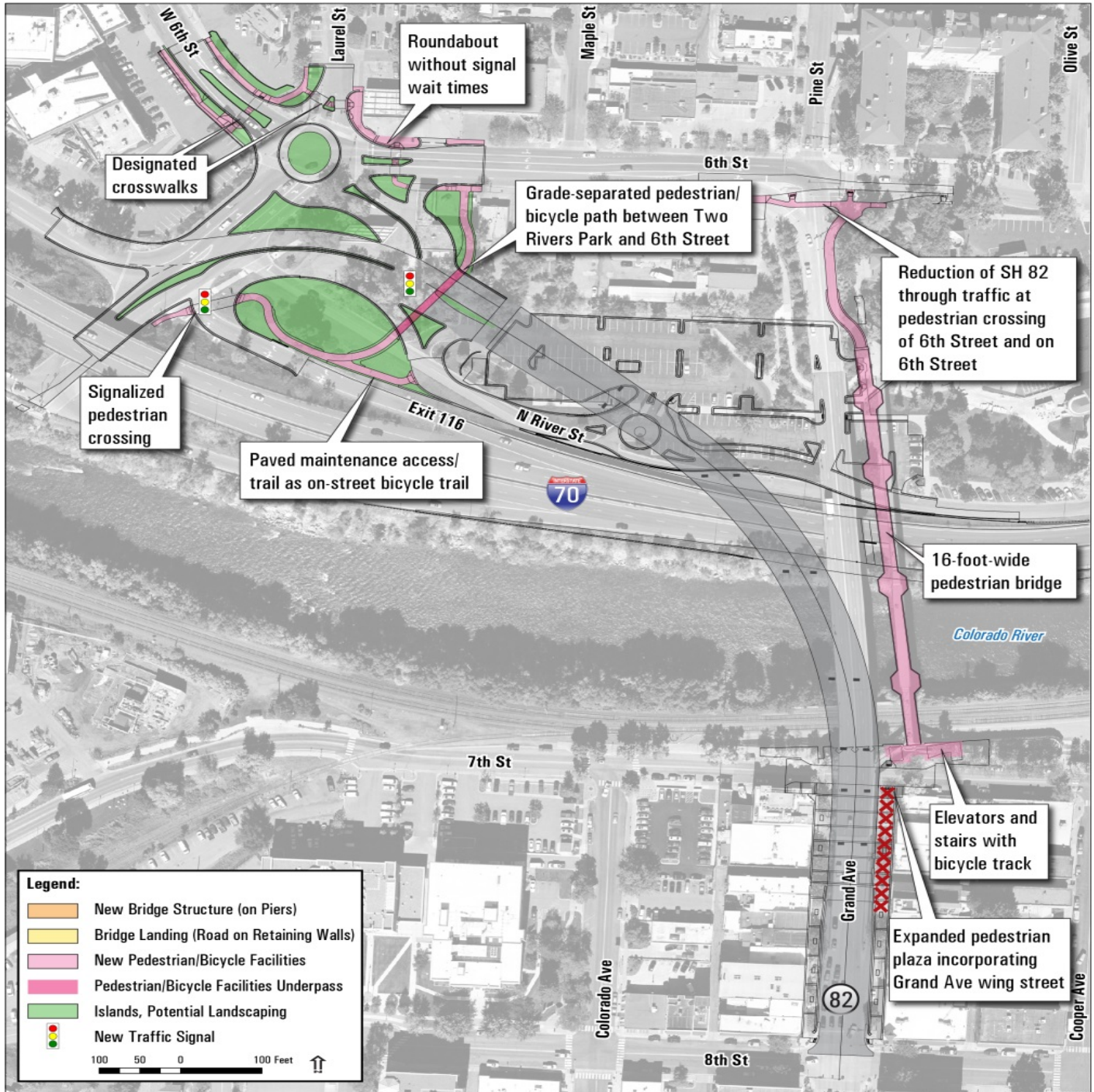
- Replace Exist Pedestrian Bridge with 16 ft wide bridge with Elevators and stairs with bike track.
- Grade Separate Ped/Bike Path under SH 82
- Significant reduction of vehicle traffic on 6th Street
- Expanded Pedestrian Plaza in the existing Grand Ave./Wing Street area.
- Signalized Ped Crossing at bottom of WB I-70 Exit 116 Ramp.
- SH 82 and 8th Street Crossing Alternatives under new bridge at alley between 7th and 8th Streets.

GAB Temporary Construction Project Elements:

- Ride Glenwood and RFTA modify routes and frequency
- Congestion for extended period will allow for opportunities to try other Commuting Alternatives.

Ped/Bike Opportunities (Others):

- 8th Street Connection
- Repurposing existing Pedestrian Bridge
- Way-Finding





CO L O R A D O
Department of
Transportation

I-70 Exit 114 Improvements

- Roadway Geometric Improvements to:
 - process added traffic,
 - manage queuing, and
 - improve capacity during peak AM and PM traffic
- Westbound Ramp Termini:
 - Modify WB on-ramp to two lanes
 - Modify US 6 EB entrance to match two lane WB on Ramp
 - Modify entrance to WB on ramp to correct exit path overlap
- Eastbound Ramp Termini:
 - Modify EB off-ramp to two-lanes
 - Lengthen EB off-ramp deceleration lane
 - Modify EB off-ramp entrance into the RAB to accommodate WB-67 Trucks

